



ISSUED FOR
TENDER

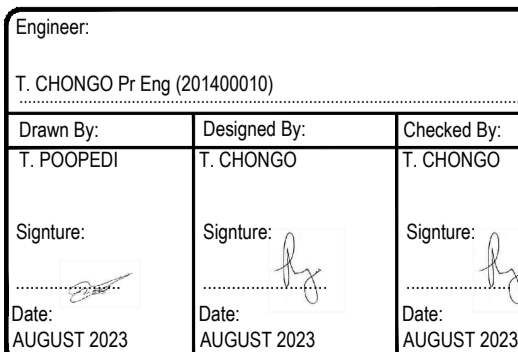
Client:



Johannesburg Water

JOHANNESBURG WATER

Turbine Hall,
65 Nanni Place Street,
Newtown, Johannesburg



ALL LEVELS TO BE CONFIRMED ON SITE.

- 1.1 THIS DRAWING MUST BE READ IN CONJUNCTION WITH RELEVANT ENGINEERING DRAWINGS.
- 1.2 DO NOT SCALE THIS DRAWING, USE ONLY CALCULATED AND WRITTEN DIMENSIONS.
- 1.3 ALL EXCAVATIONS SHOULD BE INSPECTED AND APPROVED BY THE ENGINEER ON SITE.
- 1.4 ALL DIMENSIONS ARE IN MILLIMETERS UNLESS OTHERWISE INDICATED.

Key Plan:

[illegible]

| | | | |
|-----------------------------|--------|-------------|----------------|
| Project: | | | |
| JW14406 LINBRO PUMP STATION | | | |
| Description: | | | |
| PUMP STATION ELEVATIONS | | | |
| Issued For: | | | |
| TENDER | | | |
| Size: | Scale: | Sheet No: | Original Date: |
| A1 | 1: 500 | 2 OF 2 | AUGUST 2023 |
| Project No: | | Drawing No: | Revision: |
| C01486 | | PS02 | T0 |